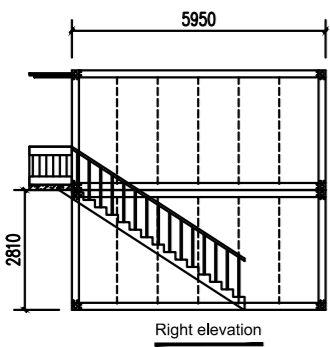


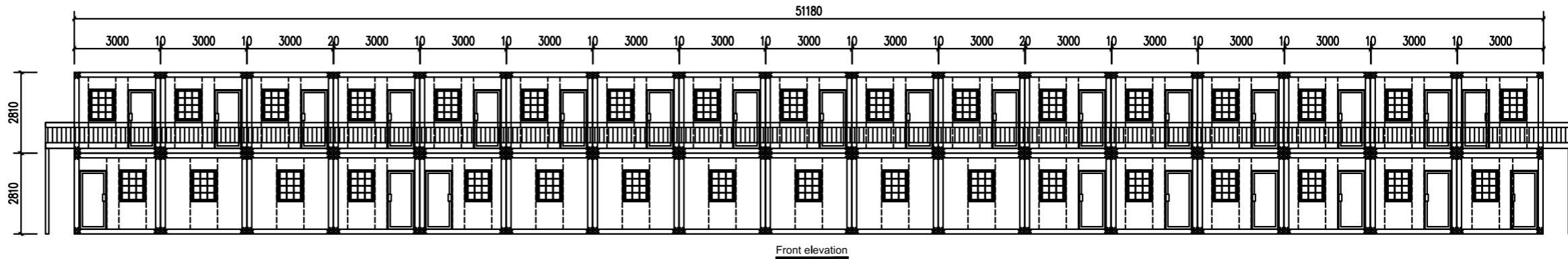
门窗表

类型	设计编号	洞口尺寸(mm)	数量	图集名称	页次	选用型号	备注
普通门	M1	930X2040	26				
	M2	700X2000	10				
普通窗	C1	930X1100	66				
	C3	290X290	2				

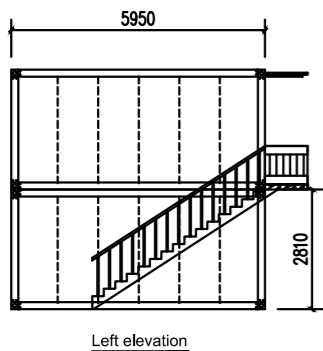
		Approve		Project		
		Auditing				
Contact		Design		Title	5.95mx51mx2.8m	Job No.
Tel:		Check				Dra No.
						Date



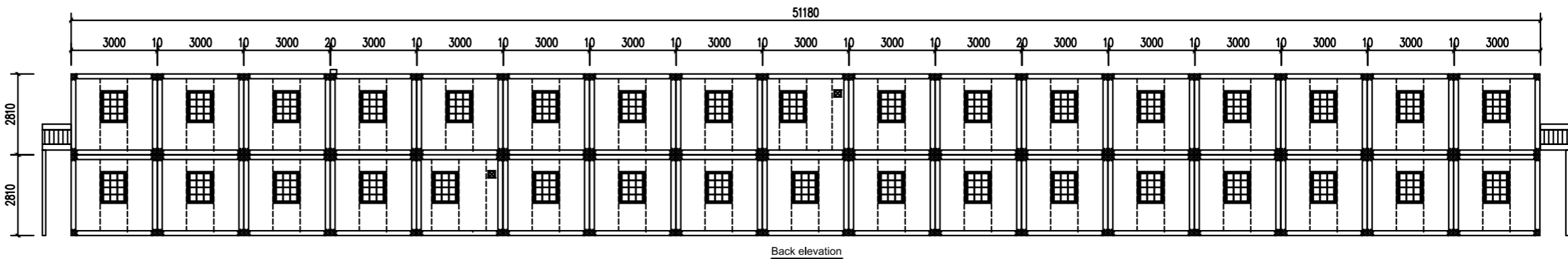
Right elevation



Front elevation



Left elevation



Back elevation

		Approve		Project	
		Auditing			
Contact		Design		Title	5.95mx51mx2.8m
Tel:		Check			
				Job No.	
				Dra No.	
				Date	